

---

**Warpstock 2024**

**Presents:**

**OpenWatcom**

---

# Overview

- Current compilers for ArcaOS
- The history of OpenWatcom
- Advantages and need-to-knows
- Installation and Configuration
- Sample program compilation

---

# Compilers used for OS/2

## OpenWatcom

The subject of this talk, and recommended for ArcaOS software development by Arca Noae.

## IBM VisualAge C/C++

A classical compiler and toolchain. Not recommended for current use as it is sorely outdated.

## GCC (OS/2 port)

A best-effort community driven compiler

---

---

# History of OpenWatcom

- OpenWatcom originally comes from Watcom C/C++, tracing its roots to the Watcom Intl. Corporation in Waterloo, Canada back in 1981.
  - In 1994, Watcom was acquired by Powersoft.
  - In 1995, Powersoft merged with Sybase.
  - Releases continued on for some time until the software was discontinued on a commercial basis around 2009.
  - Prior to Sybase's acquisition by SAP in 2010, Watcom was made open source and released at version 1.9.
-

---

# History of OpenWatcom (cont.)

- Watcom was notable for having had robust support for 32-bit DOS extender technology.
  - Many software developers from the likes of id Software, Apogee Software, and Core Design, heavily pursued 32-bit DOS game development for a time.
  - The DOS extender used most often for compiled software under Watcom was DOS/4GW.
    - 4G stands for the 4 Gigabyte limit for 32-bit software
    - W stands for Watcom, as this variant of DOS/4G was specifically designed for software compiled in Watcom C.
-


---

# Getting OpenWatcom...

- There are two versions of OpenWatcom in the wild.
    - Version 1.9 - the release Sybase made in 2010
    - Version 2.0 beta - a community port available since 2015
  - When you search for OpenWatcom on Google, one of the first results to show is for 1.9 at [openwatcom.org](http://openwatcom.org)
  - You'll want to avoid this version and instead download version 2.0 from the project-run github instance under "current-build".
  - <https://github.com/open-watcom/open-watcom-v2/releases>
-

# Getting OpenWatcom...

12 hours ago

 github-actions

 Current-build









 ff62389

Compare ▾

## Current-build Pre-release

Last updated 2024-09-24 03:09:28 UTC

### ▼ Assets 17

 <a href="#">open-watcom-2_0-c-dos.exe</a>	121 MB	12 hours ago
 <a href="#">open-watcom-2_0-c-linux-x64</a>	122 MB	12 hours ago
 <a href="#">open-watcom-2_0-c-linux-x86</a>	121 MB	12 hours ago
 <a href="#">open-watcom-2_0-c-os2.exe</a> 	121 MB	12 hours ago
 <a href="#">open-watcom-2_0-c-win-x64.exe</a>	122 MB	12 hours ago
 <a href="#">open-watcom-2_0-c-win-x86.exe</a>	121 MB	12 hours ago
 <a href="#">open-watcom-2_0-c-win16.exe</a>	121 MB	12 hours ago

---

# Improvements with 2.0 over 1.9...

- DOS tools support LFNs or long file names
  - OpenWatcom supports 64-bit hosts natively. This is especially noteworthy for Linux hosts as there is no need for multilib.
  - The OpenWatcom text editor is available as a standalone application.
  - A new two-phase build system: OpenWatcom can be built by the host's native C/C++ compiler or by itself.
-



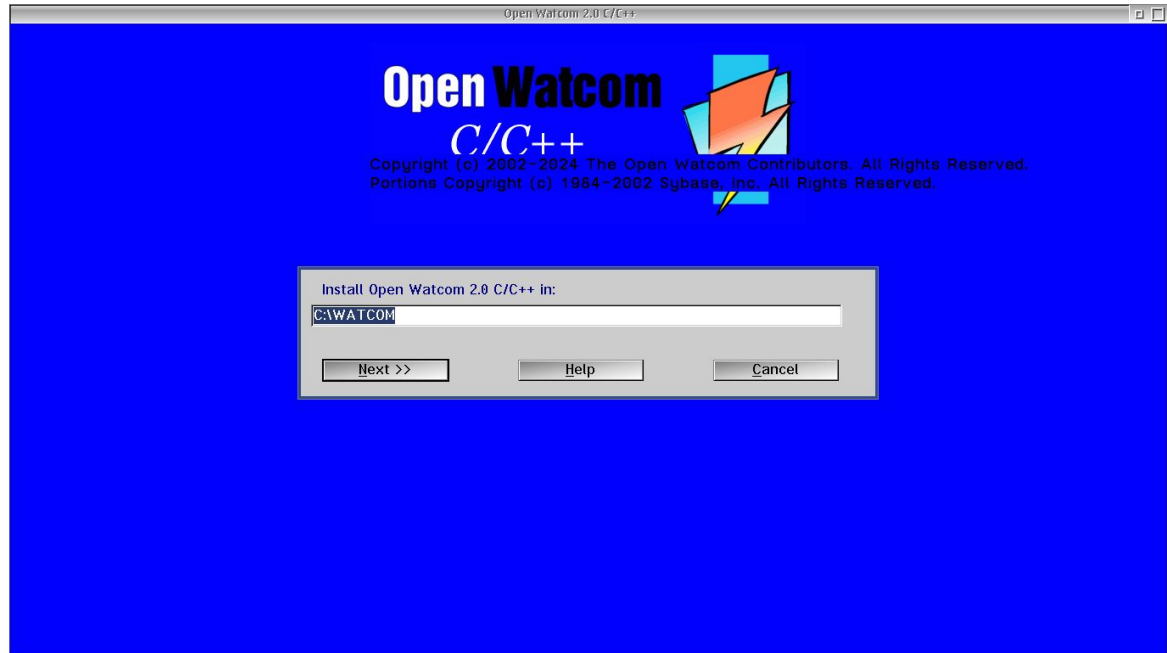
---

# Installing OpenWatcom...

- When downloading, you have your choice between a version of OpenWatcom for C/C++ or for FORTRAN77.
  - The installer is an exe style application and not a WarpIn bundle.
  - The installer will also ask what kind of compilers you wish to include in your installation such as:
    - DOS
    - Win 3.1
    - Win NT / Win 9x / Win32s
    - Linux 32-bit
    - And of course... OS/2
-

---

# Installing OpenWatcom...



---

# Installing OpenWatcom...



---

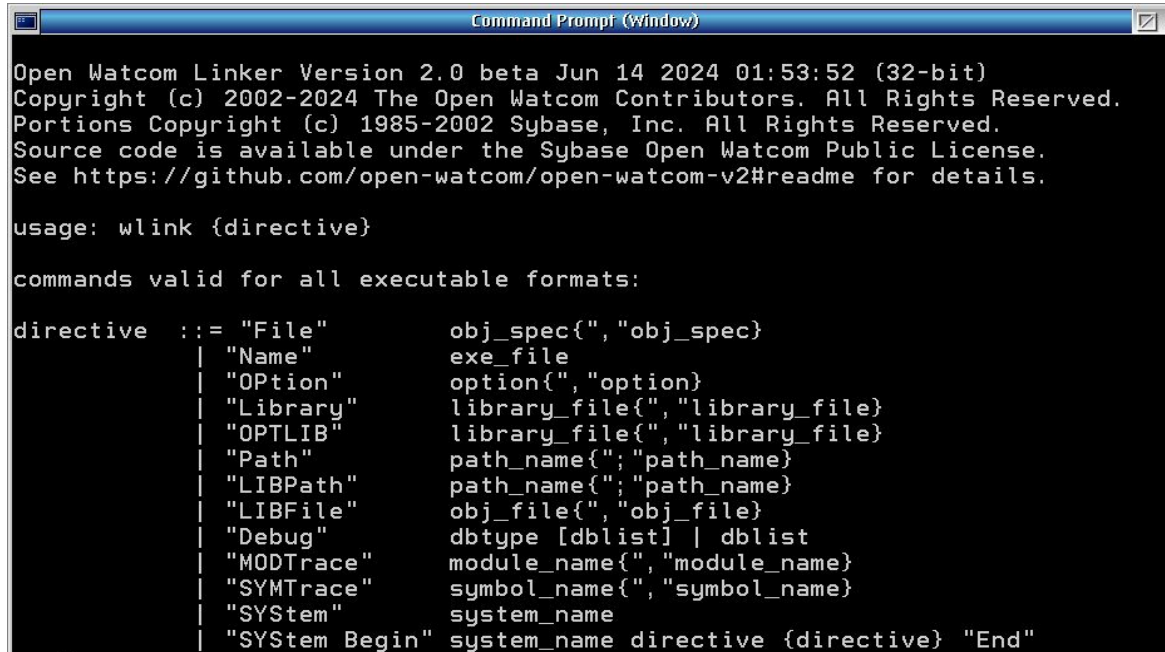
# Stand out features

OpenWatcom has a few tools up its sleeve.

- WLINK - The Watcom linker utility, useful for compiling code from the command line.
  - IDE - this is the graphical development environment that allows you to write code, run, and debug, all from one place.
  - TECHINFO - This program lists all OS/2 environment variables in a handy display, complete with page breaks.
  - WASM - Watcom assembler for compiling asm files.
  - VI - A surprisingly robust vi-style editor, complete with menus.
-

---

# WLINK



```
Command Prompt (Window)

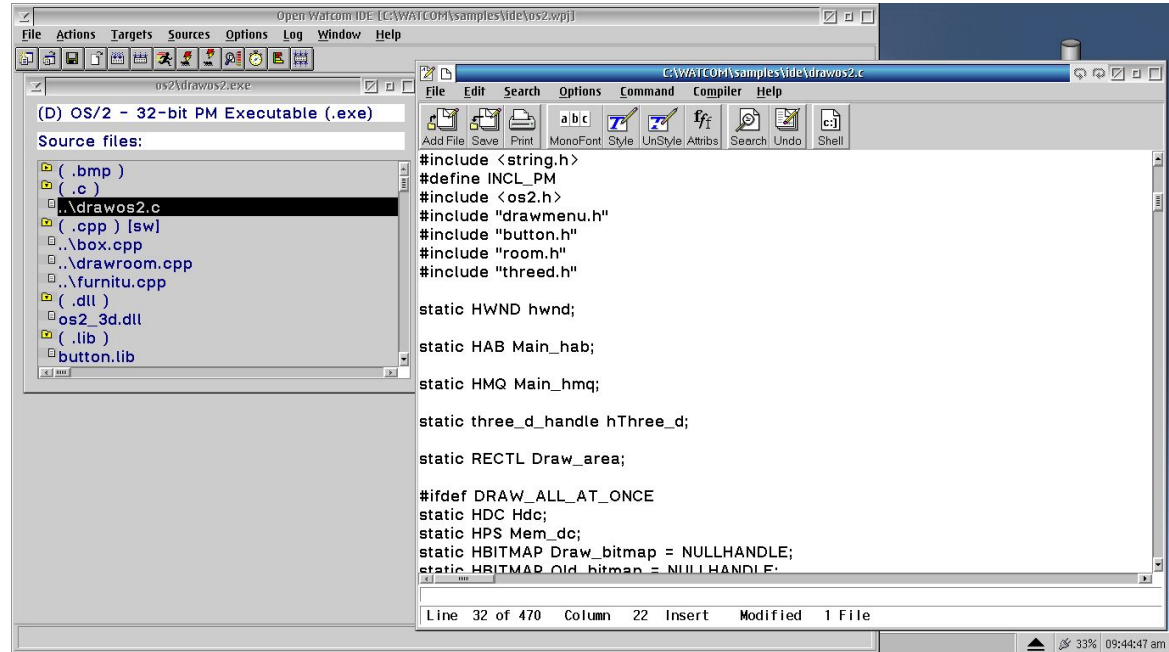
Open Watcom Linker Version 2.0 beta Jun 14 2024 01:53:52 (32-bit)
Copyright (c) 2002-2024 The Open Watcom Contributors. All Rights Reserved.
Portions Copyright (c) 1985-2002 Sybase, Inc. All Rights Reserved.
Source code is available under the Sybase Open Watcom Public License.
See https://github.com/open-watcom/open-watcom-v2#readme for details.

usage: wlink {directive}

commands valid for all executable formats:

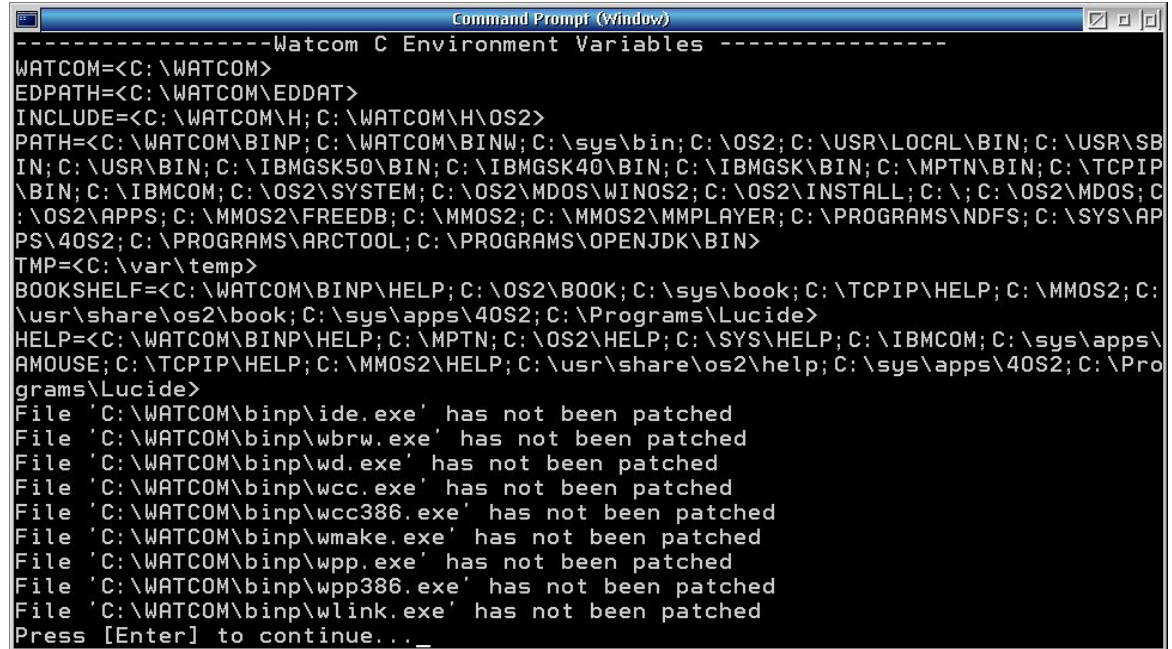
directive ::= "File"          obj_spec{"", "obj_spec"}
           | "Name"          exe_file
           | "Option"        option{"", "option"}
           | "Library"       library_file{"", "library_file"}
           | "OPTLIB"        library_file{"", "library_file"}
           | "Path"          path_name{"", "path_name"}
           | "LIBPath"       path_name{"", "path_name"}
           | "LIBFile"       obj_file{"", "obj_file"}
           | "Debug"         dbtype [dblist] | dblist
           | "MODTrace"      module_name{"", "module_name"}
           | "SYMTrace"      symbol_name{"", "symbol_name"}
           | "SYStem"        system_name
           | "SYStem Begin"  system_name directive {directive} "End"
```

# IDE



---

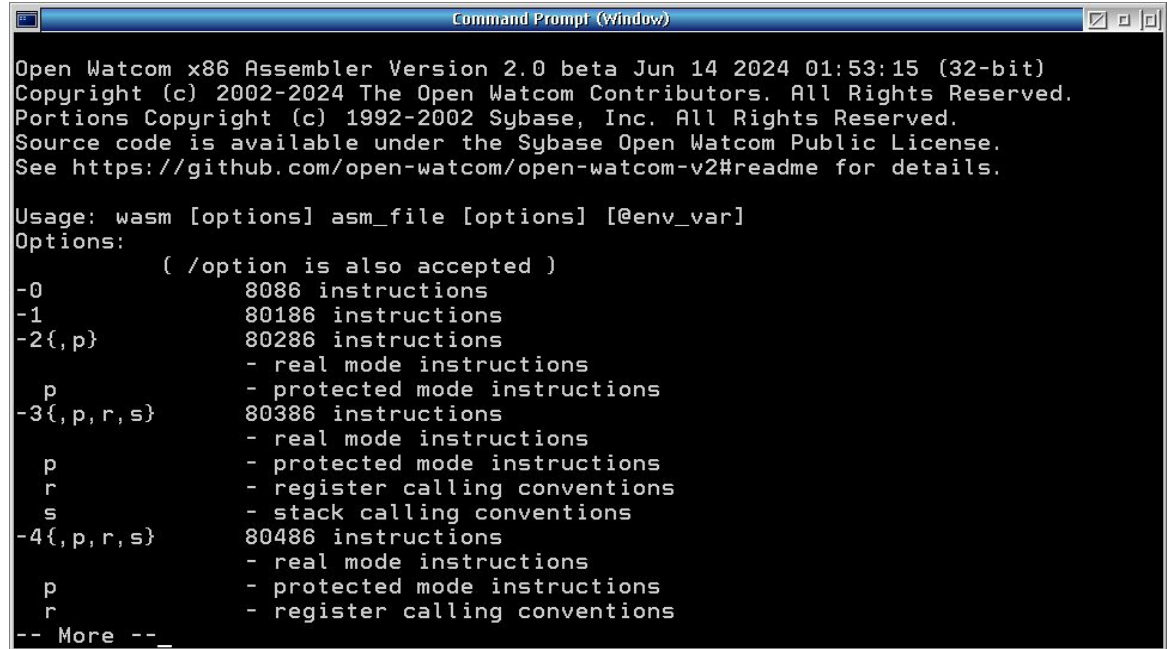
# TECHINFO



```
-----Watcom C Environment Variables -----
WATCOM=<C:\WATCOM>
EDPATH=<C:\WATCOM\EDDAT>
INCLUDE=<C:\WATCOM\H;C:\WATCOM\H\OS2>
PATH=<C:\WATCOM\BIN;C:\WATCOM\BINW;C:\sys\bin;C:\OS2;C:\USR\LOCAL\BIN;C:\USR\SB
IN;C:\USR\BIN;C:\IBMGSK50\BIN;C:\IBMGSK40\BIN;C:\IBMGSK\BIN;C:\MPTN\BIN;C:\TCPIP
\BIN;C:\IBMCOM;C:\OS2\SYSTEM;C:\OS2\MDOS\WINOS2;C:\OS2\INSTALL;C:\;C:\OS2\MDOS;C
:\OS2\APPS;C:\MMOS2\FREEDB;C:\MMOS2;C:\MMOS2\MMPLAYER;C:\PROGRAMS\NDFS;C:\SYS\AP
PS\4OS2;C:\PROGRAMS\ARCTOOL;C:\PROGRAMS\OPENJDK\BIN>
TMP=<C:\var\temp>
BOOKSHELF=<C:\WATCOM\BINP\HELP;C:\OS2\BOOK;C:\sys\book;C:\TCPIP\HELP;C:\MMOS2;C:
\usr\share\os2\book;C:\sys\apps\4OS2;C:\Programs\Lucide>
HELP=<C:\WATCOM\BINP\HELP;C:\MPTN;C:\OS2\HELP;C:\SYS\HELP;C:\IBMCOM;C:\sys\apps\
AMOUSE;C:\TCPIP\HELP;C:\MMOS2\HELP;C:\usr\share\os2\help;C:\sys\apps\4OS2;C:\Pro
grams\Lucide>
File 'C:\WATCOM\binp\lde.exe' has not been patched
File 'C:\WATCOM\binp\wbrw.exe' has not been patched
File 'C:\WATCOM\binp\wd.exe' has not been patched
File 'C:\WATCOM\binp\wcc.exe' has not been patched
File 'C:\WATCOM\binp\wcc386.exe' has not been patched
File 'C:\WATCOM\binp\wmake.exe' has not been patched
File 'C:\WATCOM\binp\wpp.exe' has not been patched
File 'C:\WATCOM\binp\wpp386.exe' has not been patched
File 'C:\WATCOM\binp\wlink.exe' has not been patched
Press [Enter] to continue..._
```

---

# WASM



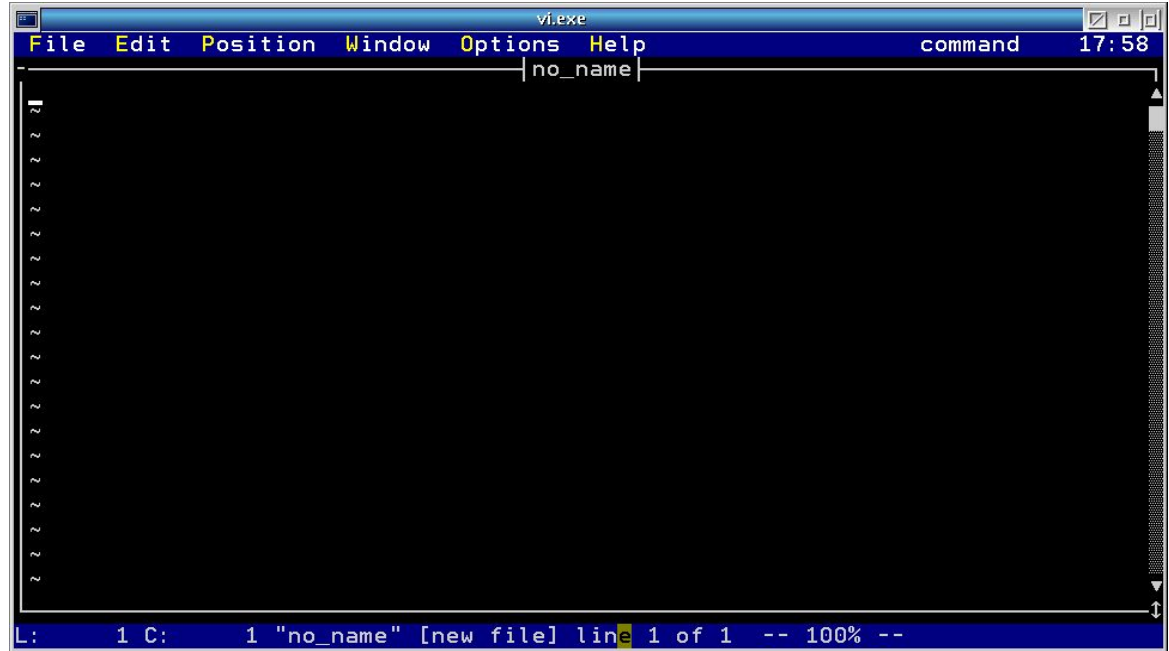
```
Command Prompt (Window)
Open Watcom x86 Assembler Version 2.0 beta Jun 14 2024 01:53:15 (32-bit)
Copyright (c) 2002-2024 The Open Watcom Contributors. All Rights Reserved.
Portions Copyright (c) 1992-2002 Sybase, Inc. All Rights Reserved.
Source code is available under the Sybase Open Watcom Public License.
See https://github.com/open-watcom/open-watcom-v2#readme for details.

Usage: wasm [options] asm_file [options] [@env_var]
Options:
    ( /option is also accepted )
-0          8086 instructions
-1          80186 instructions
-2{,p}     80286 instructions
           - real mode instructions
           p - protected mode instructions
-3{,p,r,s} 80386 instructions
           - real mode instructions
           p - protected mode instructions
           r - register calling conventions
           s - stack calling conventions
-4{,p,r,s} 80486 instructions
           - real mode instructions
           p - protected mode instructions
           r - register calling conventions
-- More --
```



---

# VI



---

# Possible drawbacks

Although few in number, there are a few potential downsides for OpenWatcom.

- The user interface in the tools are a bit dated, with a bit of a split personality. i.e. the Virtual DOS Machine debug utility utilizes WinOS/2 instead of a native interface.
  - Some more advanced features, like C99 support, are either highly experimental or not present at all.
  - It can be a bit clunky for working with multibyte characters. A command line switch has to be passed to inform what multibyte character set to use. It's from an era of Code Page 437 after all!
-

---

# Possible drawbacks

- If you're a free software license hound, the terms and conditions of the Sybase OpenWatcom Public License Agreement is considered to be \*MORE\* copyleft than the GPL and has termination clauses. Therefore, it's not FSF approved, but OSI is fine with it.
-

---

**Thank You**

---