

ArcaOS Tips, Tricks and Workarounds

Gregg Young
ygk@qwest.net



Warpstock 2017

ArcaOS Install

- PreBoot menu
 - If you aren't using an external USB DVD drive set USB CD drives to 0
 - If you have a driver trap select edit config.sys and rem it out.
 - Alt-F2 and verbose boot



ArcaOS Install

- Stay away from GPT (LUKS) with OS2 disk tools if you want anything that is on the disk.
 - Airboot and Dfsee have addressed this.
 - A post on OS2 world provides a work around
 - <http://www.os2world.com/forum/index.php?topic=1577.msg15407#msg15407>

• Peer Networking

- Make sure you install Netbios or Netbios over TCP/IP
- It can be used with Samba if you use Netbios



Config.sys

- Remove the drivers you don't need
 - PRINT01.SYS – Parallel port
 - IBM1FLPY.ADD – Floppy drives
 - USBPRT.SYS – USB printer
 - FAT32.IFS/CACHEF32.EXE – Fat 32
- Don't remove duplicate USB base drivers
 - USBEHCD.SYS
 - USBOHCD.SYS
 - USBUHCD.SYS



Config.sys

- Protect only (No Dos or Win 3)
 - Network related V-drivers (and probably some others) are still install.
 - Dos.sys is still needed
- To sort or not to sort
 - Logical Config.Sys Sort, by Doug Bissett
 - <http://hobbes.nmsu.edu/h-search.php?key=lc&pushbutton=Search>



Config.sys

- The Shell Game
 - I use 4OS2 as my default shell
 - It has some problems with some VMREXX programs
 - ANPM install fails using it
 - ArcaMapper behaves badly with it.
 - It is not supported for Arca Noae drivers
 - It is easy to change back to CMD when I need to
 - We have the source so we can fix things
 - <http://trac.netlabs.org/4os2>



Config.sys

- Command line switches
 - IFS=J:\OS2\BOOT\FAT32.IFS /CACHE:2048 /H /Q /AC:* /LARGEFILES /EAS /FAT /EXFAT
 - /EAS is broken in the early .10 versions
 - /FAT gives you VFAT support (long names in FAT16)
 - /EXFAT - Experimental
 - Not available in the version shipped with ArcaOS
 - BASEDEV=OS2AHCI.ADD /N /F
 - Should speed drive access
 - VIRTUALADDRESSLIMIT
 - 1024 – 3072h



Config.sys

- DOS what do I change/add
 - DOS=LOW,NOUMB DOS=HIGH,UMB
 - Add VCOMPAT.SYS
 - <http://hobbes.nmsu.edu/h-search.php?key=vcompat&pushbutton=Search>
 - SHELL=4DOS.COM
 - <https://www.4dos.info/v4dos.htm>



Dos Video issues

- VVGA.SYS

- /nodisplay /nowinbgnd /nowincmd /nowinnotify /dual /int10off /debug

- VSVGA.SYS /int10textgrfxsafe

- May need: mode co80 cls in Autoexec.bat

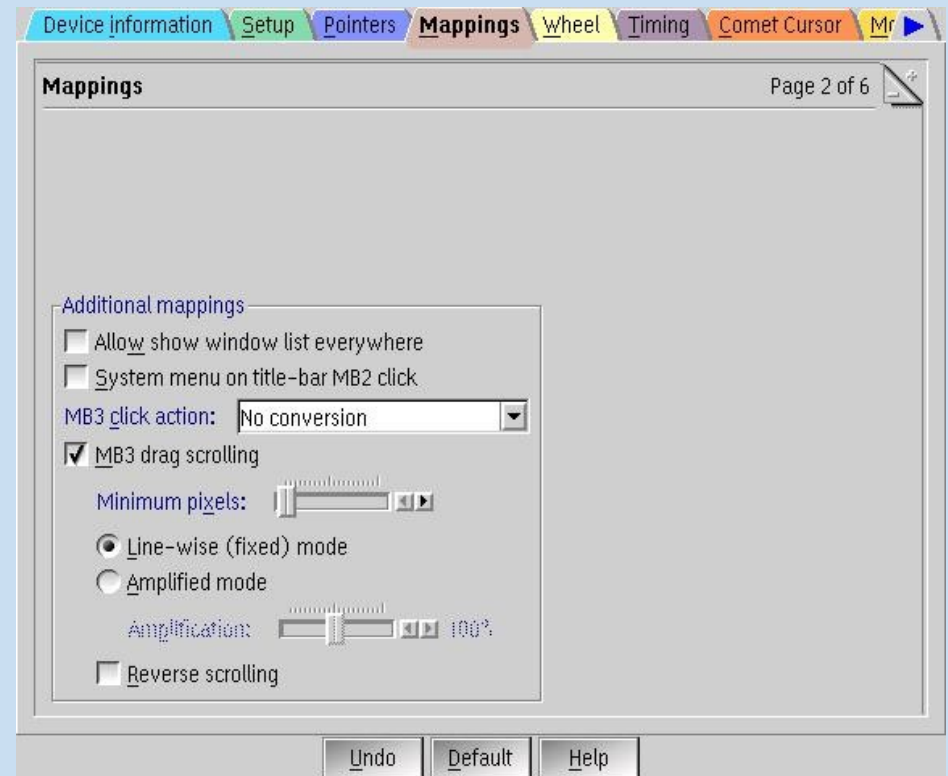
- VVGA switches plus /bgexec /int10restoremode /int10restoremods /int10restorerregs /int10restorebank /int10bgndvgamode /noint10restoremode /noint10restoremods /noint10restorerregs /noint10restorebank /noint10bgndvgamode /int10textgrfxsafe

- VXGA.SYS



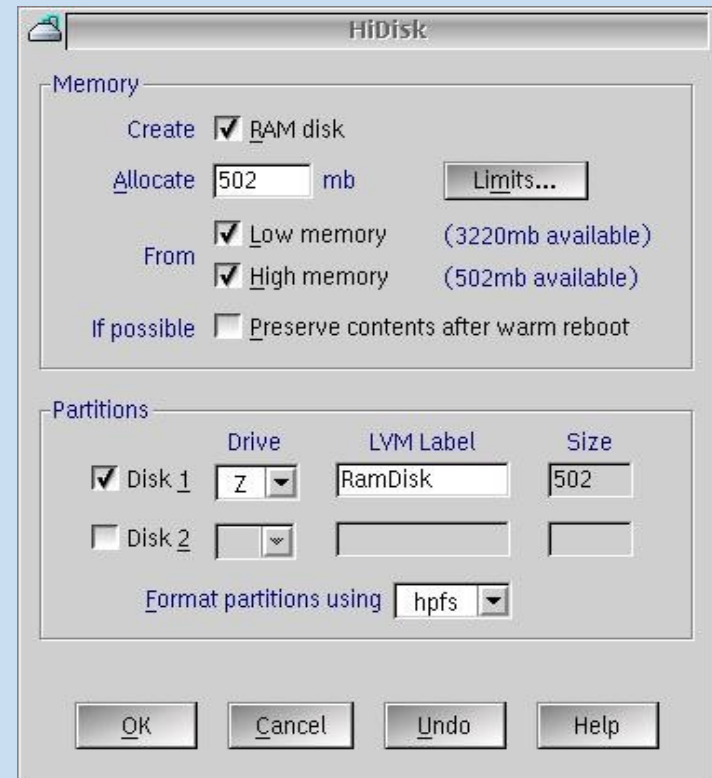
Mice

- Amouse vs Smouse
- Multipt
- XWP drag scroll
- Problem with eFTEpm



A New Loader

- OS2LDR.CFG
 - Can create a RAM disk above the 4 gig limit
 - RAMDISK = HPFS Z:
 - RAMDISKNAME = RamDisk
 - Can limit memory use
 - Trapdumps



```
OS2 CMD EXE /C md Z \temp
SET TMP=Z \TEMP
SET TEMP=Z \TEMP
SET TMPDIR=Z \TEMP
```



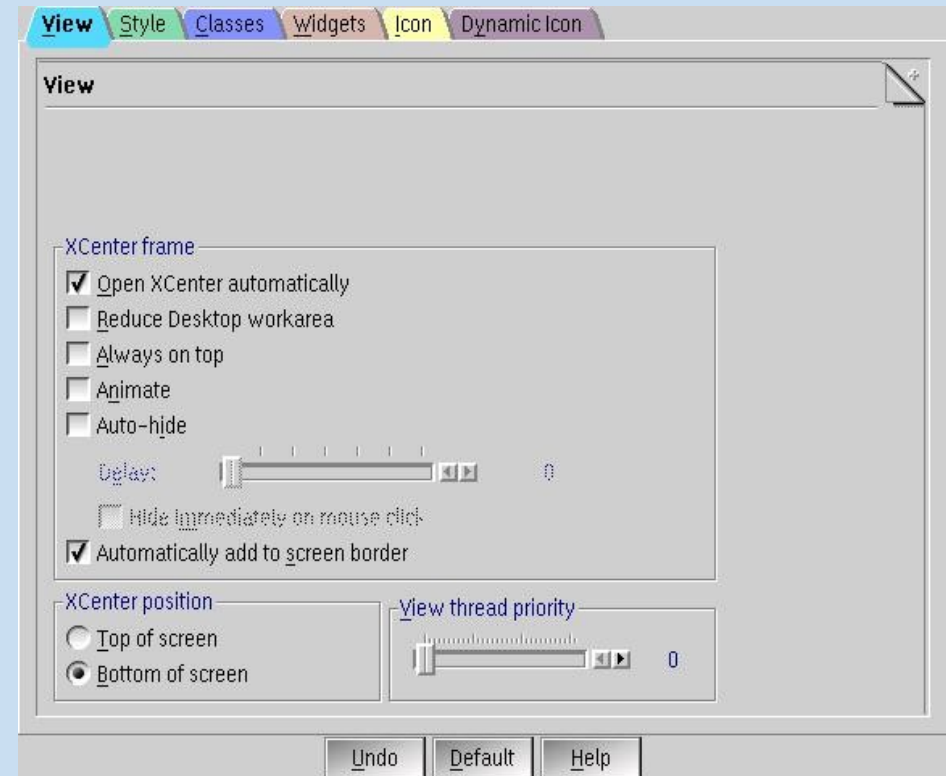
Xcenter

- Lswitcher plugin or stand alone
- Remove unused plugins
 - XWILan
 - Only needed for WIFI.
 - Doesn't unload when Xcenter is closed
 - Xcenter very slow in opening
 - Unlock rename restart desktop or reboot
 - Winlist if you use ISwitcher
 - Part of Desktop process



Xcenter

- Add to screen boarder
 - Setting in Xcenter properties
 - Can be done in the Screen object



ANXWP vs XWP

- Reboot to options
 - It works with Airboot but doesn't give a list of partitions
 - `setboot /iba:"eCS-N"`
- Shutdown folder
- Turbo Folders
 - Changes the behavior of associations
- Settings Object



ArcaMapper

- Issues
 - Autostart
 - Shares and/or Server not shown
 - Advanced mount options



ArcaMapper

- Issues continued
 - 4OS2
 - Smb.conf
 - Network Printing
 - Verbose log files may quickly fill a volume



Autostart

- There are two ways to restart the Samba shares
 - One that work pretty well and Autostart
 - The second alternative is to use Netdrive's volume persistence
 - Turn it on before mounting any drives
 - PersistentVolumeConfiguration = volumes.cfg
 - Unremark it in J:\Programs\NDFS\ndctl.cfg



Autostart

- So what's the problem?
 - Well minimized on startup means a visible rectangular window with a throbber annoyingly on the screen.
 - While Netdrive's volume persistence always seemed to restore all the shares Autostart generally managed to throw an error dialog about something failing to load
 - The best however is with both Netdrive's volume persistence and Autostart are used. Autostart puts up a message that each share is already loaded.



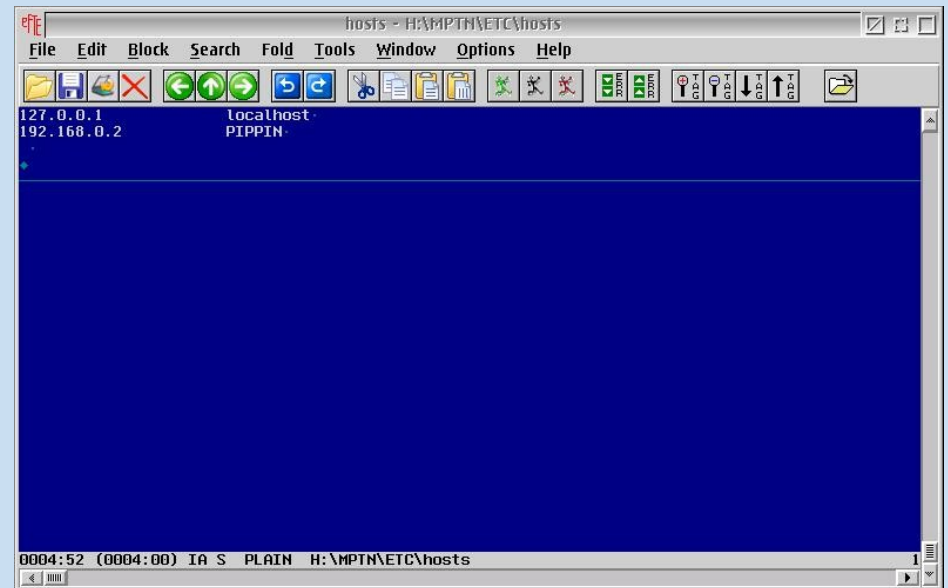
Autostart

- So what's the problem?
 - The final trick it has is when you try to uninstall it. You get the message Failure - could not remove Autostart object.
 - OK this is easy to fix – simply remove the icon from the startup folder (and drag directly to the trash folder)
 - Note autostarting the shares is situational. Great with always present desktops. Not so great with traveling laptops



Shares and/or Server not shown

- Update the hosts file to list all the servers before starting ArcaMapper
- 4OS2 hangs on rescan
- Kill the background samba process



The screenshot shows a Notepad window titled "hosts - H:\MPTN\ETC\hosts". The window contains the following text:

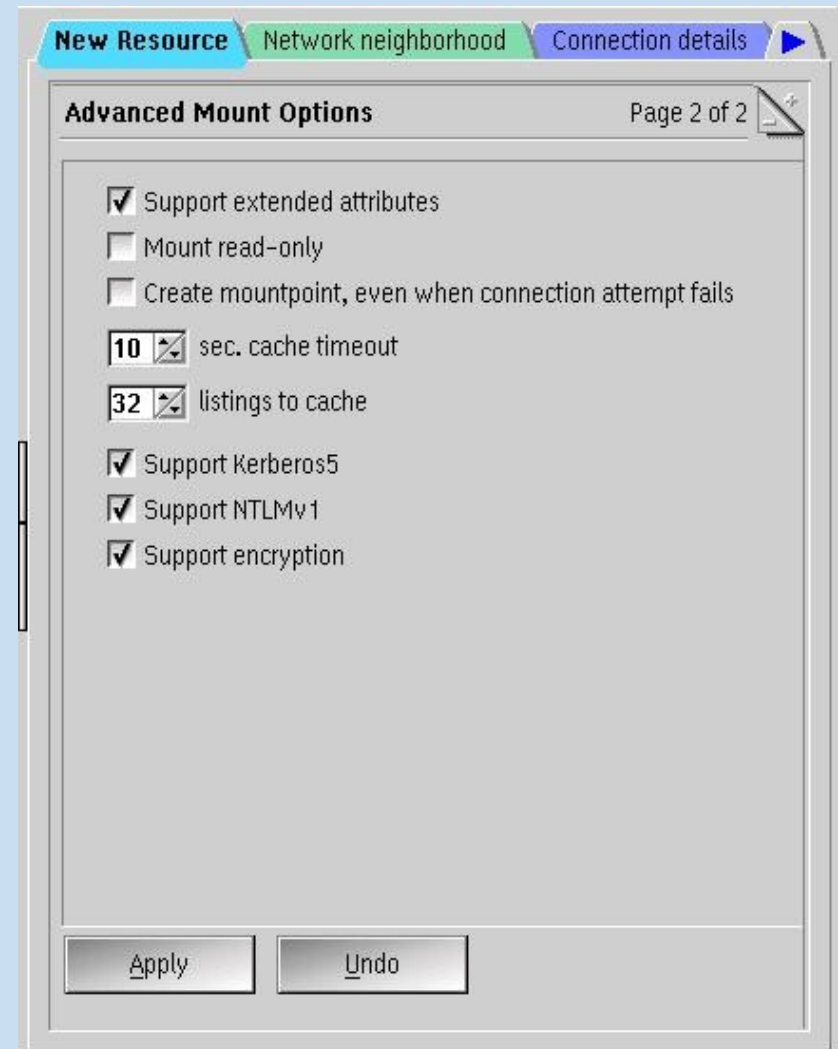
```
127.0.0.1 localhost
192.168.0.2 PIPPIN
```

The status bar at the bottom of the window displays: "0004:52 (0004:00) IA S PLAIN H:\MPTN\ETC\hosts".



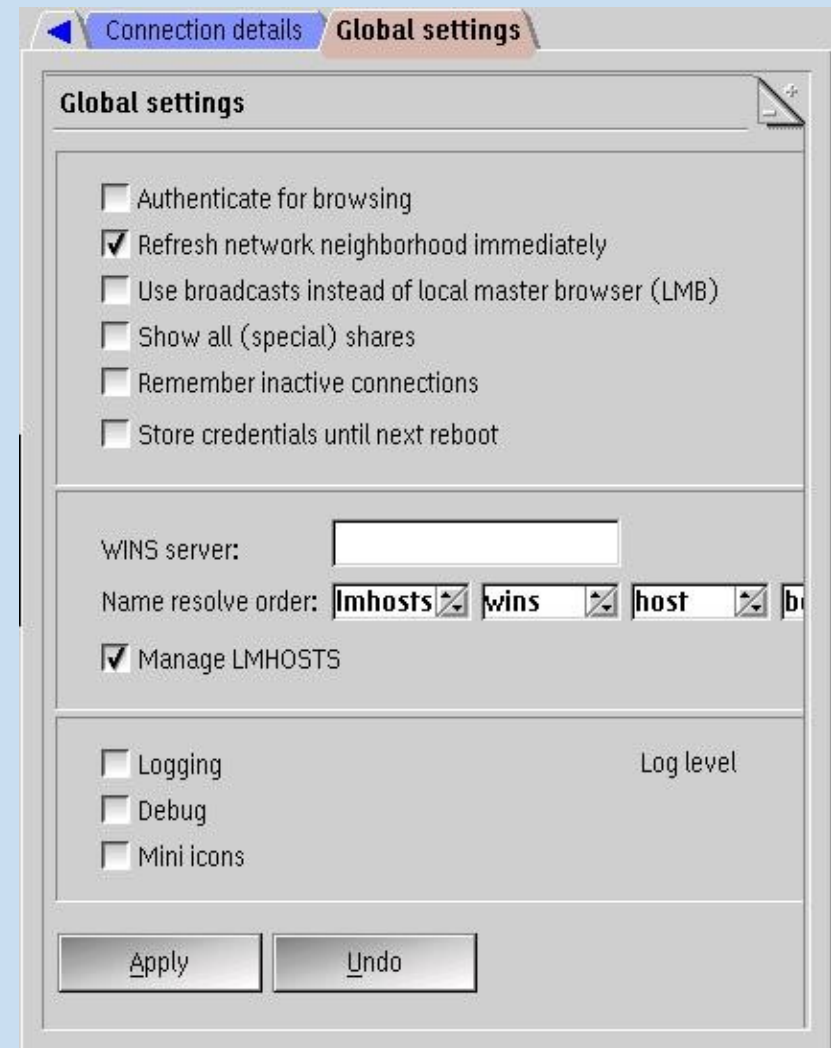
Advanced mount options

- These options are selected by default
- They are mutually exclusive
- Their location is unintuitive



- Smb.conf

- ArcaMapper doesn't take its setting from Smb.config
- It overwrites them if you save
- Loglevel has 2 formats
- Verbose log files may quickly fill a volume

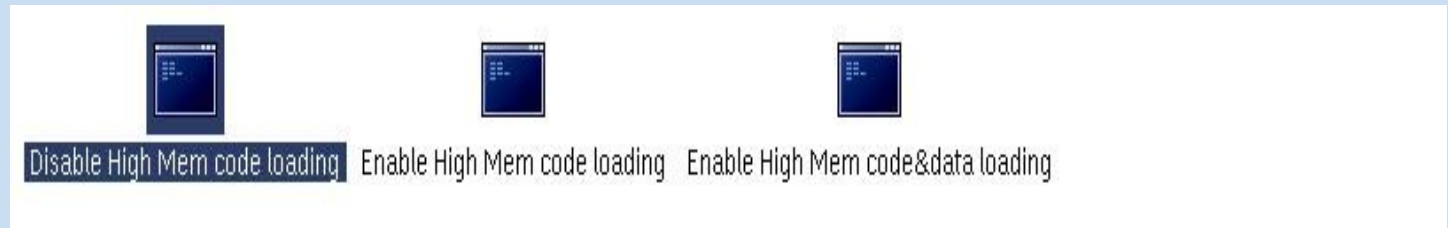


Network Printing

- Not supported by ArcaMapper
- Use the smb printer port (install with Print Manager)
- Smbprint.exe doesn't work with parallel port attached printers
- You can use Print.exe (os2 utility)
- However it doesn't delete the spooled files which will fill the drive
- Scheduled cmd to delete these

Highmem

- Mozilla apps, AOO and ClamAV
- Highmem.exe (included with AOO)
- Exehdr.exe
- Warnings about stability
- Why not everything



Hide floppy icons

- Drives folder properties
 - Include tab
 - Add
 - Attribute: Object Title
 - Comparison type: is equal to
 - Comparison value: Drive A
- Repeat for drive B



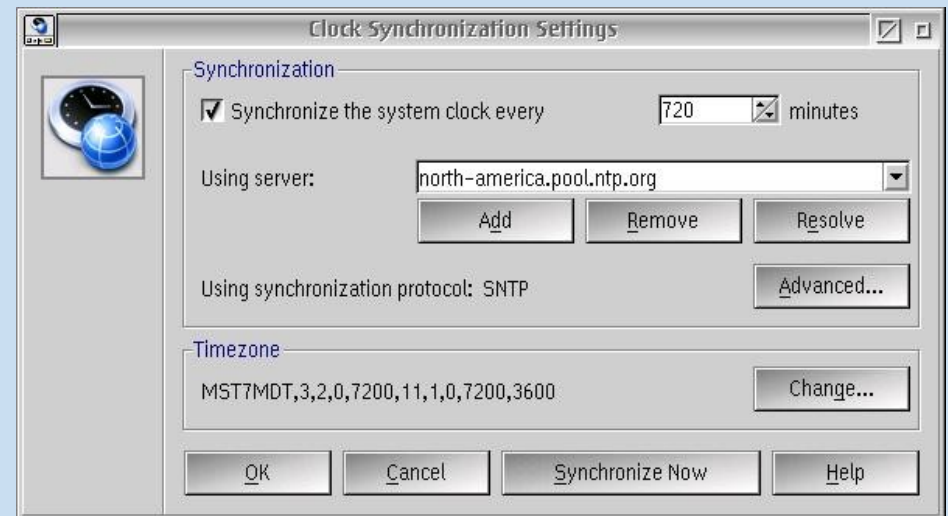
Mozilla

- 45ESR
 - Hardware Vsync timer
 - layout.frame_rate
- Hosts
 - <http://winhelp2002.mvps.org/hosts.htm>
- Privoxy



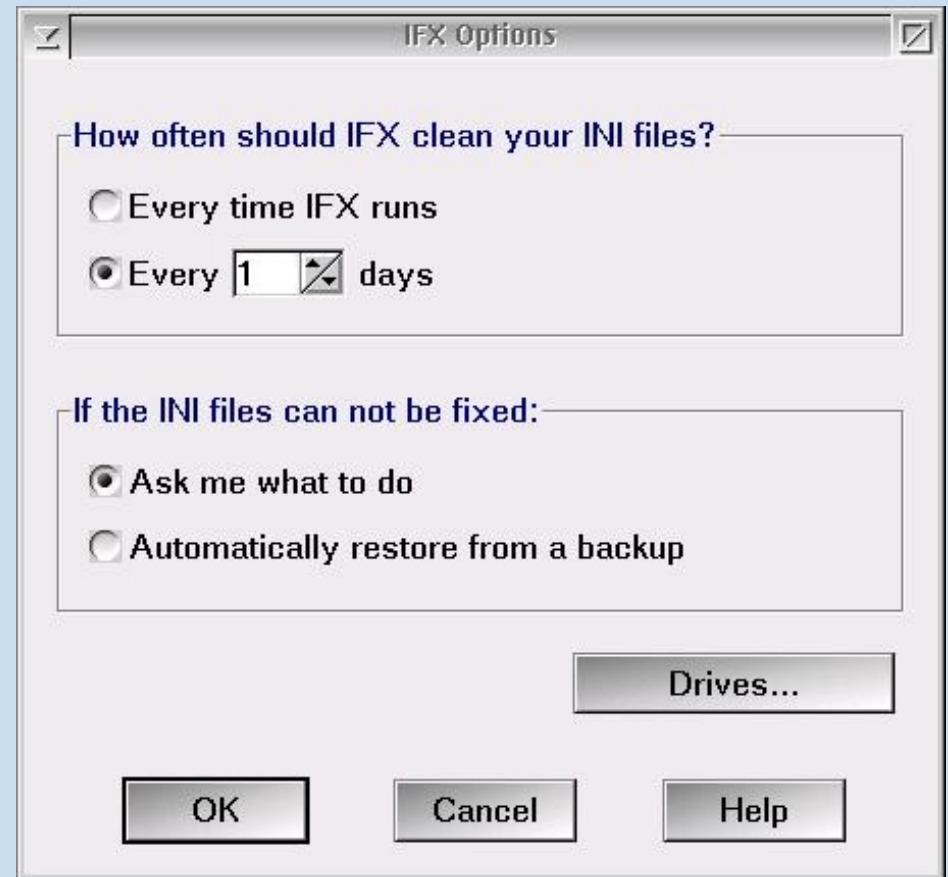
Clock Sync

- The correct time
- Daytime as a backend
- Can use to update your time zone settings



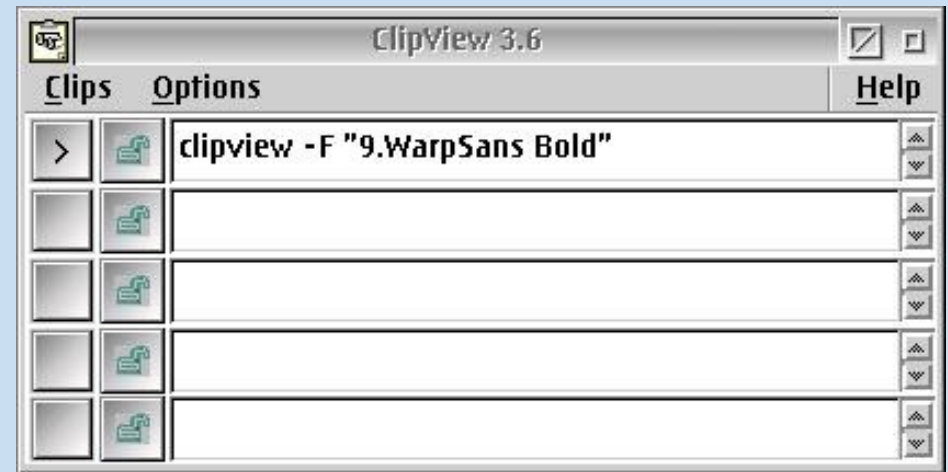
IFX

- Cleans INI file handles
- Backup and restore
- Not a replacement for full featured INI cleaners/checkers



Missing Programs

- ClipView
- Screen capture utility
 - Gotcha
- Simple Calendar
- Switcher



Thank You



Warpstock 2017

Slide 30 of 30