

Installation Guide

WARPSTOCK 2013
ATLANTA, GEORGIA

October 4-6, 2013



GIMP GATHER YOUR FILES

- Go to Alex Taylor's site:
<http://www.altsan.org/os2/utils/index.html>
(About half-way down the page.)
- Download the WPI files and the ReadMe file.

GIMP GATHER YOUR FILES

- Installation order is very important:
 - HobLink:
 - HobLink_ux1135.zip
 - XFree86 runtime:
 - xfree86-4_5_0-runtime.wpi
 - GIMP:
 - gimp-2_2_8-install.wpi (will also load the next two).
 - gimp-2_2_8-required-libs.wpi
 - gimp-2_0_7-help.wpi

GIMP

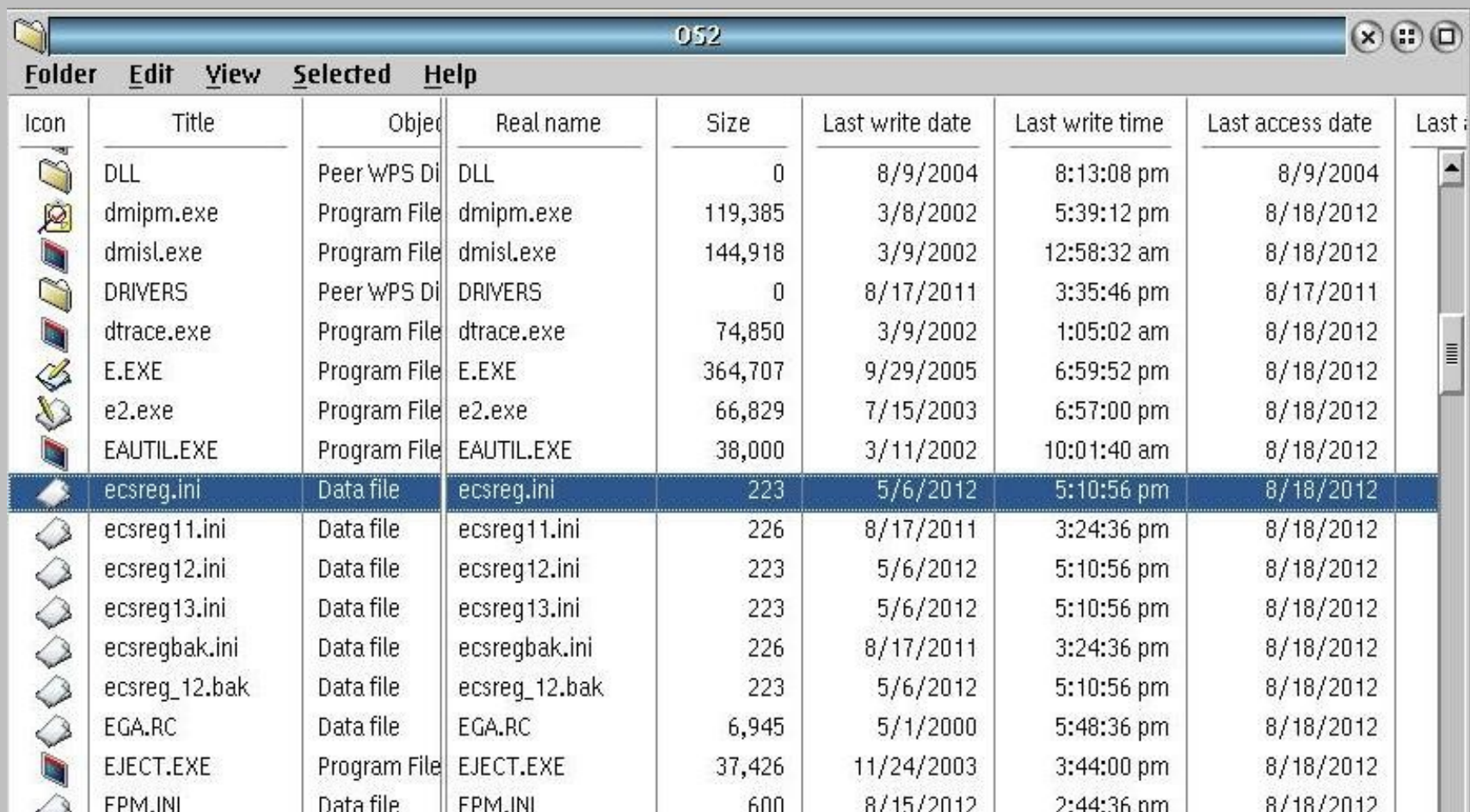
ADD ECSREG.INI

- Hoblink was offered free on the eCS 1.2 edition. Therefore it looks in `C:\OS2` for a file named `ecsreg.ini` from the eCS 1.2 edition. You must obtain this file from your eCS 1.2 CD and place it in your current `C:\OS2` directory.

GIMP

ADD ECSREG.INI

- Go to your \OS2 directory and see if it looks like this:



The screenshot shows a file explorer window titled 'OS2'. The window displays a list of files and folders in a table format. The file 'ecsreg.ini' is selected and highlighted in blue. The table columns are: Icon, Title, Object, Real name, Size, Last write date, Last write time, Last access date, and Last modified.

Icon	Title	Object	Real name	Size	Last write date	Last write time	Last access date	Last modified
	DLL	Peer WPS Di	DLL	0	8/9/2004	8:13:08 pm	8/9/2004	
	dmipm.exe	Program File	dmipm.exe	119,385	3/8/2002	5:39:12 pm	8/18/2012	
	dmisl.exe	Program File	dmisl.exe	144,918	3/9/2002	12:58:32 am	8/18/2012	
	DRIVERS	Peer WPS Di	DRIVERS	0	8/17/2011	3:35:46 pm	8/17/2011	
	dtrace.exe	Program File	dtrace.exe	74,850	3/9/2002	1:05:02 am	8/18/2012	
	E.EXE	Program File	E.EXE	364,707	9/29/2005	6:59:52 pm	8/18/2012	
	e2.exe	Program File	e2.exe	66,829	7/15/2003	6:57:00 pm	8/18/2012	
	EAUTIL.EXE	Program File	EAUTIL.EXE	38,000	3/11/2002	10:01:40 am	8/18/2012	
	ecsreg.ini	Data file	ecsreg.ini	223	5/6/2012	5:10:56 pm	8/18/2012	
	ecsreg11.ini	Data file	ecsreg11.ini	226	8/17/2011	3:24:36 pm	8/18/2012	
	ecsreg12.ini	Data file	ecsreg12.ini	223	5/6/2012	5:10:56 pm	8/18/2012	
	ecsreg13.ini	Data file	ecsreg13.ini	223	5/6/2012	5:10:56 pm	8/18/2012	
	ecsregbak.ini	Data file	ecsregbak.ini	226	8/17/2011	3:24:36 pm	8/18/2012	
	ecsreg_12.bak	Data file	ecsreg_12.bak	223	5/6/2012	5:10:56 pm	8/18/2012	
	EGA.RC	Data file	EGA.RC	6,945	5/1/2000	5:48:36 pm	8/18/2012	
	EJECT.EXE	Program File	EJECT.EXE	37,426	11/24/2003	3:44:00 pm	8/18/2012	
	FPM.INI	Data file	FPM.INI	600	8/15/2012	2:44:36 pm	8/18/2012	

GIMP

ADD ECSREG.INI

- If it does, just copy ecsreg.ini to a backup file.
- Copy ecsreg12.ini to ecsreg.ini.

GIMP INSTALL HOBLINK

- Install Hoblink.
- Run Xsession from the HobLink folder.
- Verify it runs and displays similar to the next page.

Login

User ID:

Password:

Command

Command:

Log file Message window

Close timeout (sec.):

HOBLink
X11
Version 3.5

OS/2

Copyright © 1993 - 1997 HCB electronic GmbH & Co. KG



GIMP

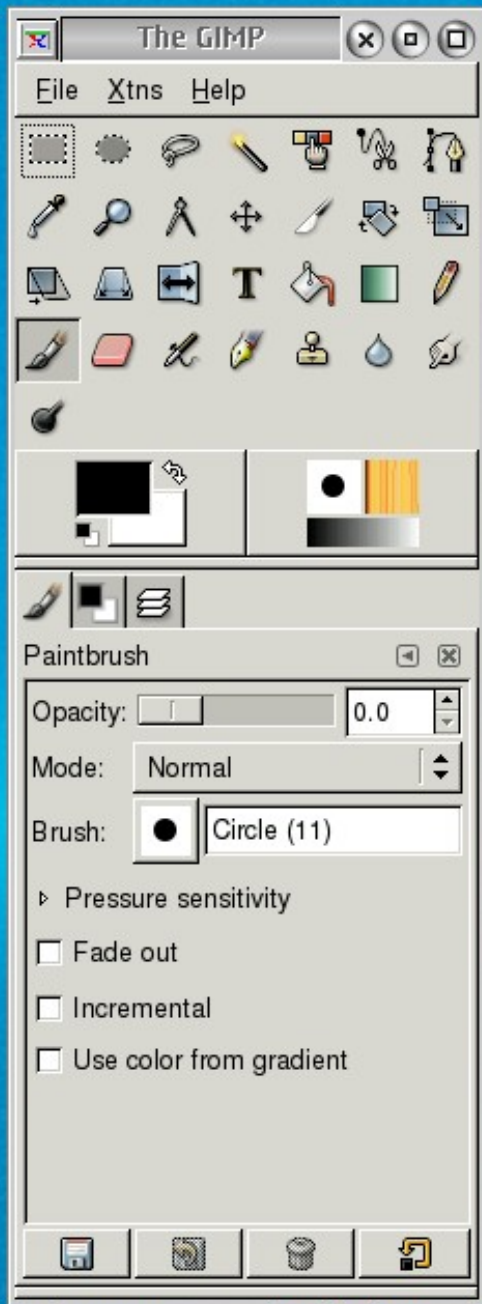
INSTALL XFREE86 RUNTIME

- Install the XFree86 Runtime WPI.
- Install GIMP WPIs.

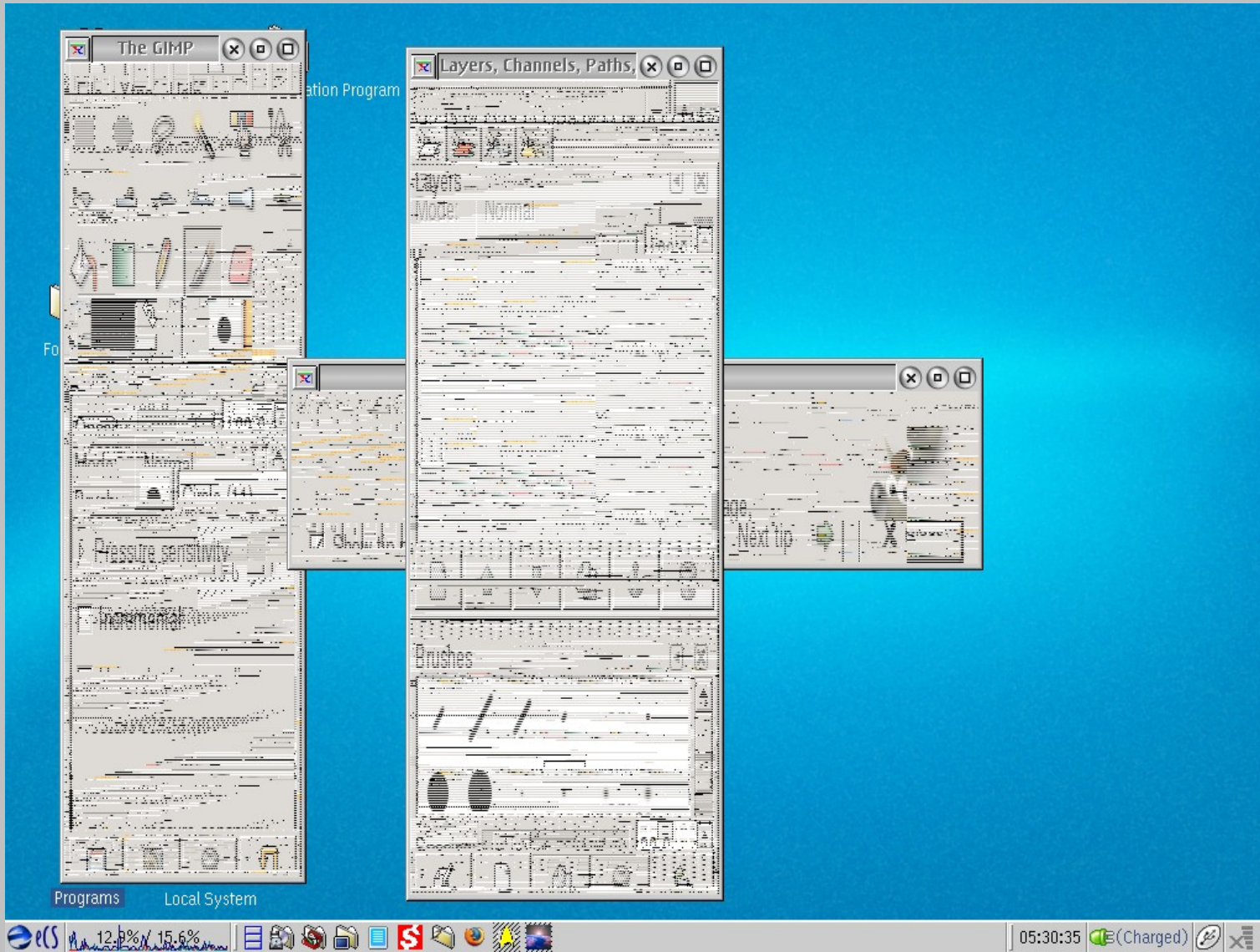
GIMP

THE END OF THE BEGINNING!

- Run GIMP and you should see the image below.
- If you do, it is the end of the beginning.



HOWEVER, IF YOU SEE THIS...



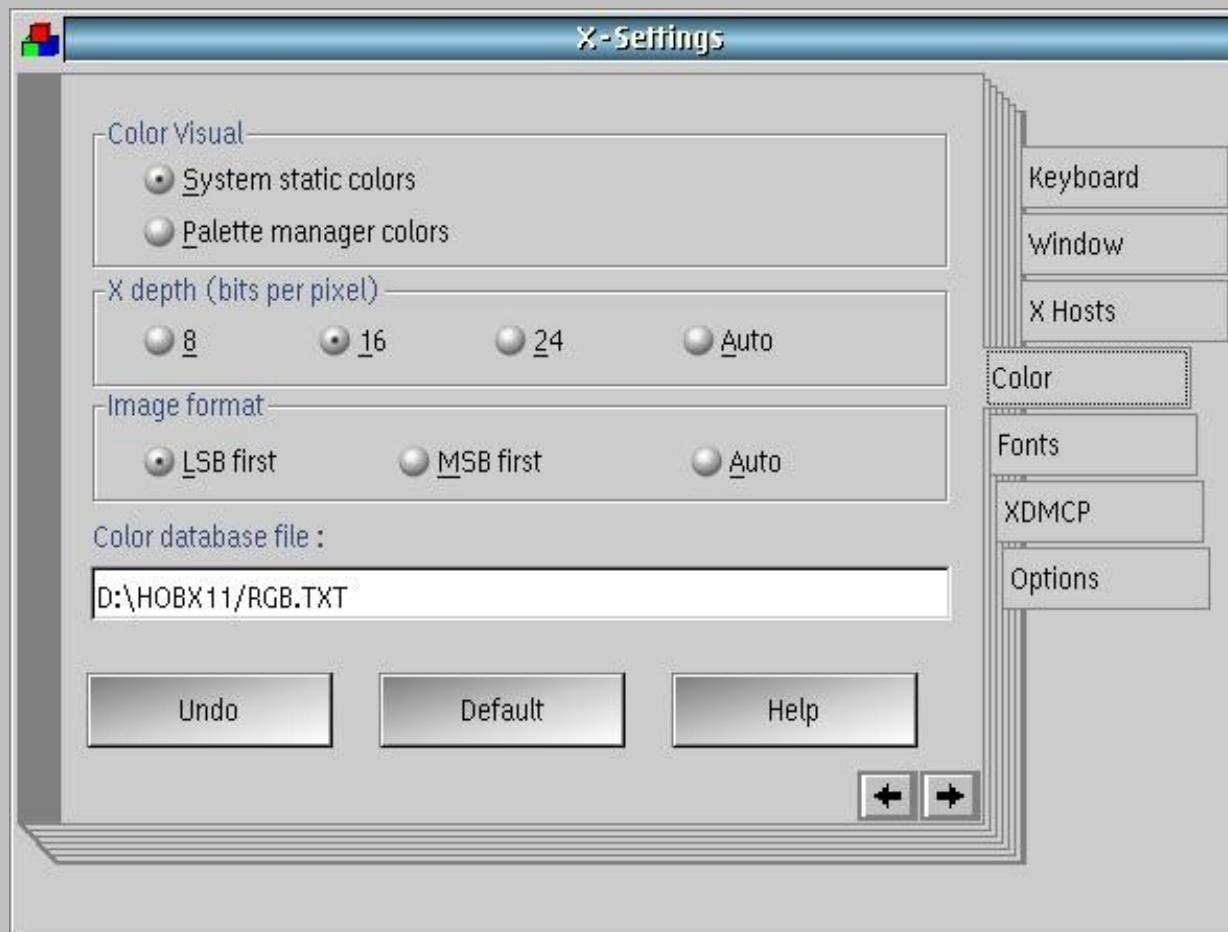
HOWEVER, IF YOU SEE THIS...

- Alex Taylor recommends that you go to Hoblink XSettings.



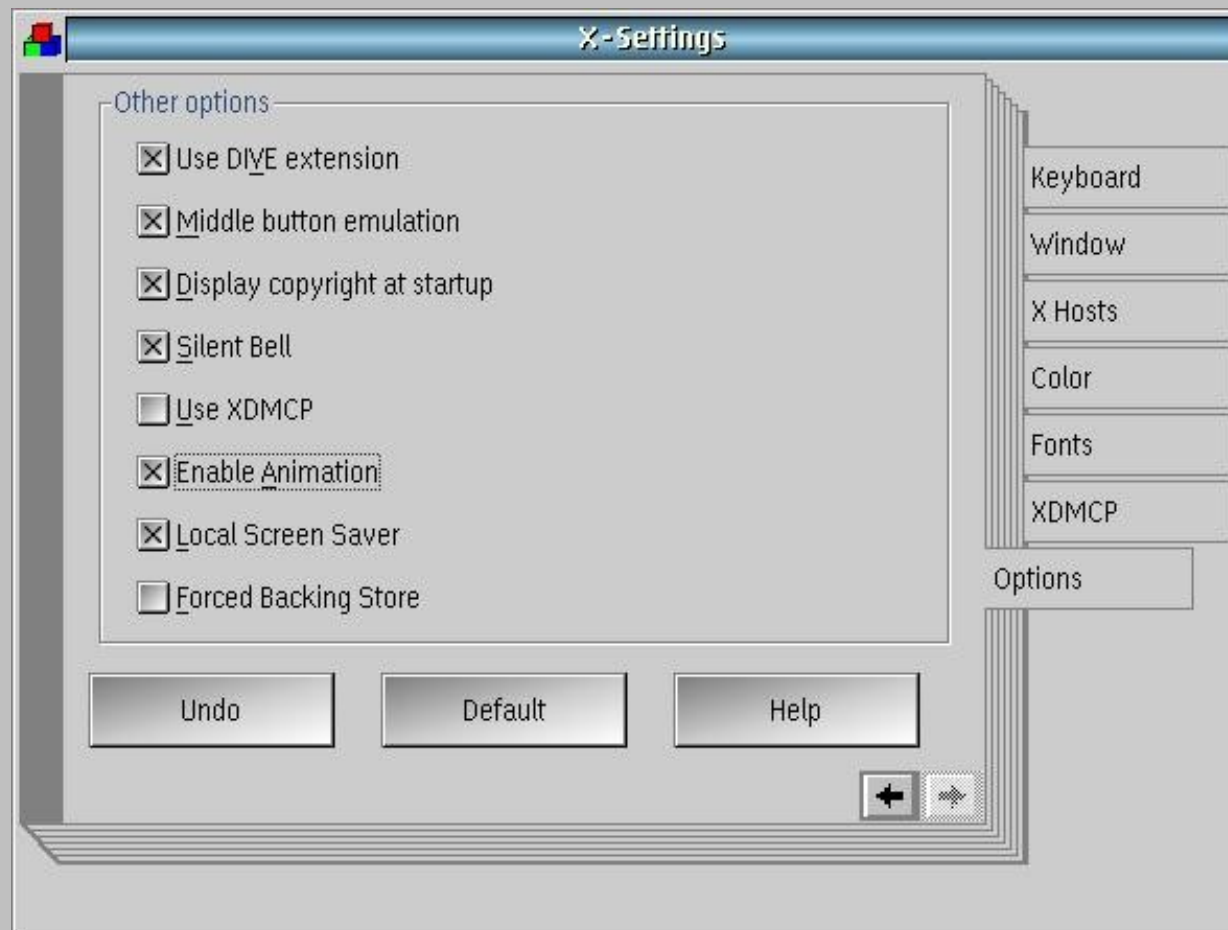
HOWEVER, IF YOU SEE THIS...

- On the Color tab, select 16 bits per pixel.



HOWEVER, IF YOU SEE THIS...

- On the Options tab, toggle “Use Dive extension”.



RAMFS

- If your computer has a lot of RAM, you may want to download and install RAMFS from Hobbes, because the GIMP cannot access RAM above 512 mb.
- Search for ramfs121.zip
- We'll talk more about this when we gather.

HAPPY GIMPING!