

WELCOME!



1



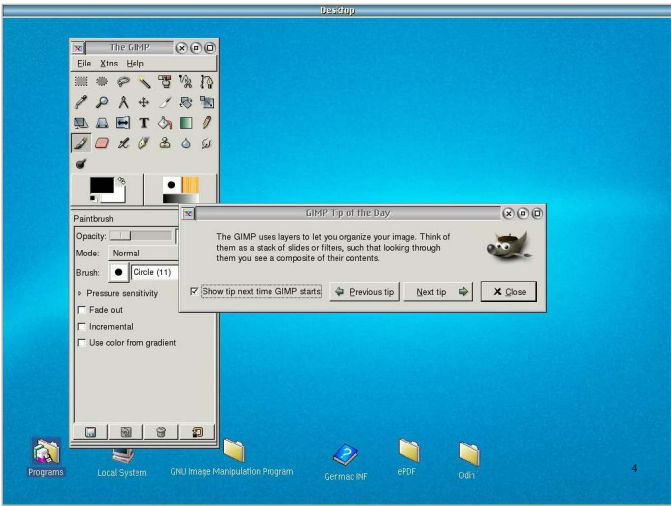
GNU Image Manipulation Program

2

GIMPWHAT'S IT GOOD FOR?

- Photo retouching, for example:
 - Hiding objects in photos
 - Changing the background to transparent
- Image authoring
- Written in OS/2
- Requires an X11 server to provide display functions
- GIMP home: www.gimp.org

3



GIMP

INSTALLATION INSTRUCTIONS

▮ Hobbes WPI

▮ Hobbes ZIP

▮ Alex Taylor's

▮ Gregory Shaw's installation instructions

5

GIMP

INSTALLATION INSTRUCTIONS

▮ Hobbes WPI

▮ Source:
<http://hobbes.nmsu.edu/h-search.php?key=gimp&pushbutton=Search>

▮ Downloaded the WPI & HobLink from Hobbes

▮ No ReadMe file available.

▮ Installed WPIs

▮ After installation, nothing would do anything.

▮ Removed this installation.

6

GIMP

INSTALLATION INSTRUCTIONS

Hobbes ZIP

1

Source:

<http://hobbes.nmsu.edu/h-search.php?key=gimp&pushbutton=Search>

1

Requires Xfree86

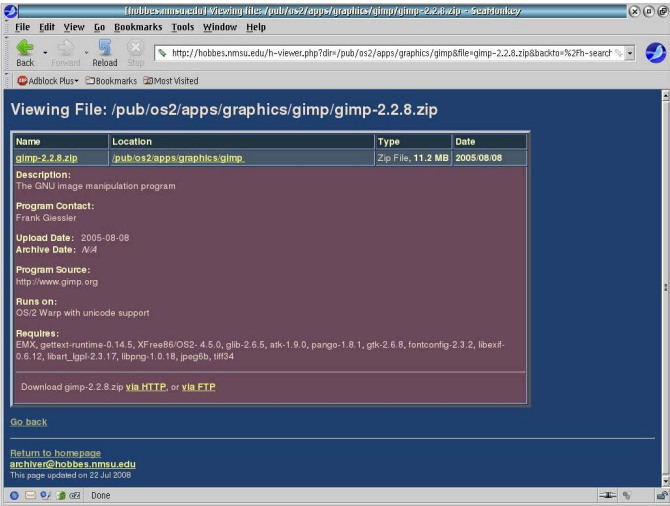
1

Requires a long list of files.

1

Decided against this due to limits on my time.

7



GIMP

INSTALLATION INSTRUCTIONS

Alex Taylor's

1

Source:

<http://www.altsan.org/os2/utills/xf86-gimp/>

1

Much improved descriptions on Hobbes.

1

These WPI files include all of the files you need to run GIMP, except HOBLINK.

1

Best executed ReadMe file.

1

Includes all you need to know, except one thing.

9

GIMP

INSTALLATION
INSTRUCTIONS

Gregory Shaw's

- ¹ Source: <http://www.os2notes.com/os2gimp2.html>
- ¹ Points out that HOBLink was included with eCS 1.2, and HOBLink will not run without the eCS 1.2 ecsreg.ini file located in the OS2 directory.
- ¹ This appears to be true of the "Trial" version of HOBLink on Hobbes.

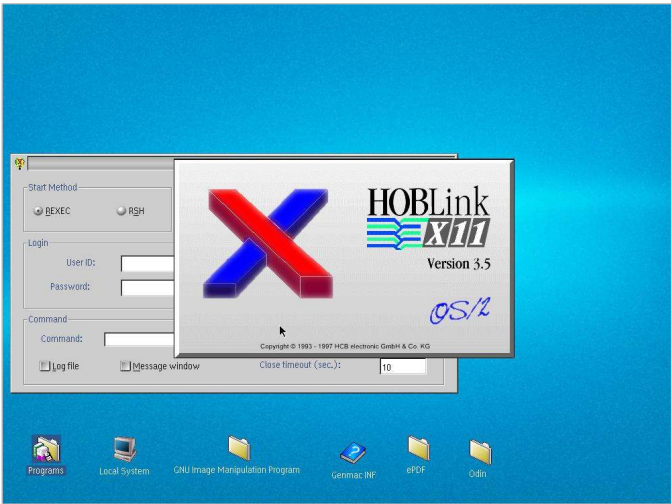
10

GIMP

LET'S INSTALL!

- ▮ Please refer to the HobLink !ReadMe.txt to install HobLink.
- ▮ Install GIMP WPis using Alex Taylor's !ReadMe.txt
- ▮ Run Xsession from the HobLink folder.
- ▮ Verify it runs and displays similar to the next page.

11



GIMP

LET'S INSTALL!

Oh yes, Gregory Shaw's !ReadMe.txt

13

Gimp 2.2.8 - OS/2 Release Notes

file:///E:/WARPSTOCK/2012_WARPSTOCK PRESENTA...

os/2 releasenotes

HomepageForumQuestionsSoftware/2ReviewsOS/2WorldThis'NexusContact

Installing Gimp 2.2.8

The easiest way to use Gimp is with HOBLINK2, it is included with eComStation 1.2. Alex Taylor has written a WarpN install routine for setting up the GIMP version 2.2.8 (the latest OS/2 version) to run without needing the XFree86/2 server installed.

I spent two days trying to install Gimp manually (missing dll). Then I found Alex's home page and the packages that he created for Gimp. I would like to thank P.Gueller for the Gimp port and Alex for his warpN packages.

If HOBLINK2 is not an option for you, then you can use XFree86 v4.6. I will cover installing XFree86 (at later date) at the end of this article.

UPDATE: How to install Gimp 2.2.8 on eCom 2.0 GA

>Frank wrote:

>

Files for OS/2

Standards for OS/2

Question of the Week!

News

Recent posts

Recent News post

NewsPortal for eCS

OS/2 Reviews

Firefox Drag&Drop

eComStation 2.0

Desktop Wizard 1.41

Audio/Data CD-Creator

Java 6 for os/2eCs

Reviews from BlueNexus

14

>Frank wrote:

>

> Hi Klaus,

> On Mon, 19 Jul 2010 17:27:13 +0200, Klaus Schiemenz wrote:

>Hi,

>the only graphical access to my Linux root server is via X11.

>HOBLINK X11 was part of the eCS 1.2 MR distribution. But it

>is not included in the current eCS 2.0 distribution, unfortunate.

>After migration from eCS 1.2 MR to eCS 2.0 I'm getting always a

>'license agreement violation' fault while starting the *HOBLINK

>X11/WM* server. Also a new installation from the eCS 1.2

>Application CD produces the same result.

>

>Does anybody know a trick to bring it back to work in eCS 2.0?

>Hoblink X11 needs a file called ecsreg.ini (from eCS 1) in the OS2

>directory on the boot drive to work.

>

> regards,

> Frank

Installing Gimp 2.2.8

Please carry out the following steps to run X applications on an OS/2 computer.

1 of 3

05/05/12 05:36 pm

15

Stuart Updike

1

GIMP

LET'S INSTALL!

Go to your \OS2 directory and see if it looks like this:

OS2

Icon	Title	Object	Real name	Size	Last write date	Last write time	Last access date	Last
DLL		Peer WPS DI	DLL	0	8/9/2004	8:12:08 pm	8/9/2004	
dmipm.exe		Program File	dmipm.exe	119,395	3/8/2002	5:39:12 pm	8/18/2012	
dmisL.exe		Program File	dmisL.exe	144,318	3/9/2002	12:58:32 am	8/18/2012	
DRIVERS		Peer WPS DI	DRIVERS	0	8/17/2011	3:35:46 pm	8/17/2011	
dtrace.exe		Program File	dtrace.exe	74,850	3/9/2002	1:05:02 am	8/18/2012	
E.EXE		Program File	E.EXE	364,707	9/29/2005	6:59:52 pm	8/18/2012	
e2.exe		Program File	e2.exe	66,829	7/15/2003	6:57:00 pm	8/18/2012	
EAUTLLE.XE		Program File	EAUTLLE.XE	38,000	3/11/2002	10:01:40 am	8/18/2012	
ecsreg.ini		Data file	ecsreg.ini	223	5/6/2012	5:10:56 pm	8/18/2012	
ecsreg11.ini		Data file	ecsreg11.ini	226	8/17/2011	5:24:36 pm	8/18/2012	
ecsreg12.ini		Data file	ecsreg12.ini	223	5/6/2012	5:10:56 pm	8/18/2012	
ecsreg13.ini		Data file	ecsreg13.ini	223	5/6/2012	5:10:56 pm	8/18/2012	
ecsregbak.ini		Data file	ecsregbak.ini	226	8/17/2011	3:24:36 pm	8/18/2012	
ecsreg_12.bak		Data file	ecsreg_12.bak	223	5/6/2012	5:10:56 pm	8/18/2012	
EGARC		Data file	EGARC	6,945	5/1/2000	5:48:36 pm	8/18/2012	
EJECT.EXE		Program File	EJECT.EXE	37,426	11/24/2003	3:44:00 pm	8/18/2012	
FPM.INI		Data file	FPM.INI	600	8/15/2012	7:44:36 pm	8/18/2012	

16

GIMP

LET'S INSTALL!

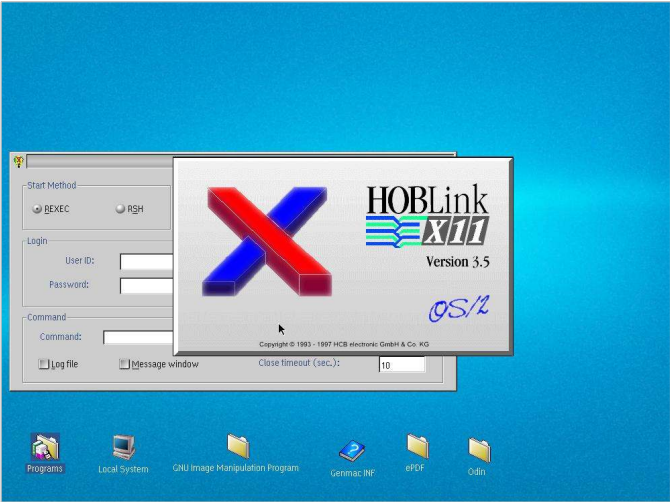
If is does, just copy ecsreg.ini to a backup file.

Copy ecsreg12.ini to ecsreg.ini

Now, run Xsession in the HobLink folder.

You should see the image below.

17



LET'S INSTALL!

- [illegible]

